

TR 24

CONJUNTO RESIDENCIAL

Planta / Floor: 0

Escaleras / Stairs: 1

Puerta / Door: C

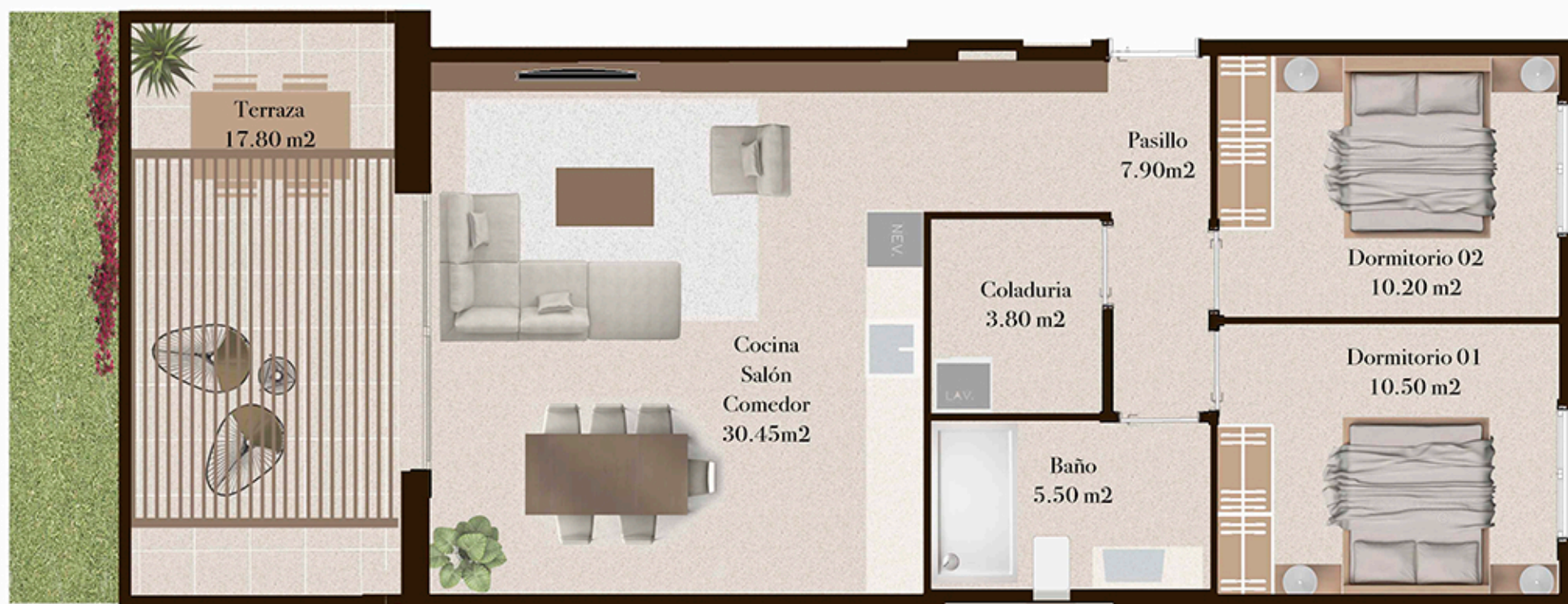
Sup. útil / Useful surface: 68,35 m²

Terraza / Terrace area: 17,80 m²

Sup. const. / Built surface: 101,25 m²



GROUND FLOOR



E 0 1 2 3 4 5 10 m