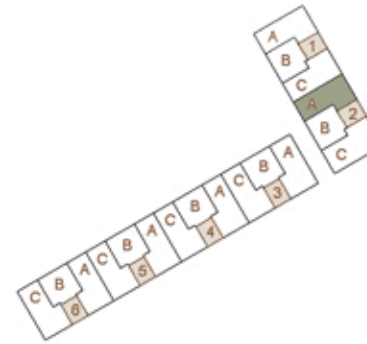


TR 24

CONJUNTO RESIDENCIAL

Planta / Floor: 1
Escaleras / Stairs: 2
Puerta / Door: A

Sup. útil / Useful surface: 56,50 m²
Terraza / Terrace area: 7,30 m²
Sup. const. / Built surface: 77,85 m²



Ⓧ FIRST FLOOR

