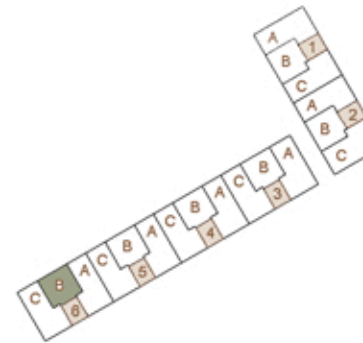


TR 24

CONJUNTO RESIDENCIAL

Planta / Floor: 1
Escaleras / Stairs: 6
Puerta / Door: B

Sup. útil / Useful surface: 44,45 m²
Terraza / Terrace area: 6,40 m²
Sup. const. / Built surface: 59,65 m²



Ⓟ FIRST FLOOR



E 0 1 2 3 4 5 10 m