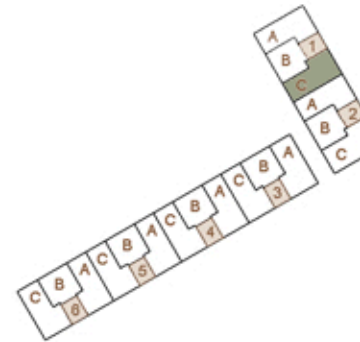


TR 24

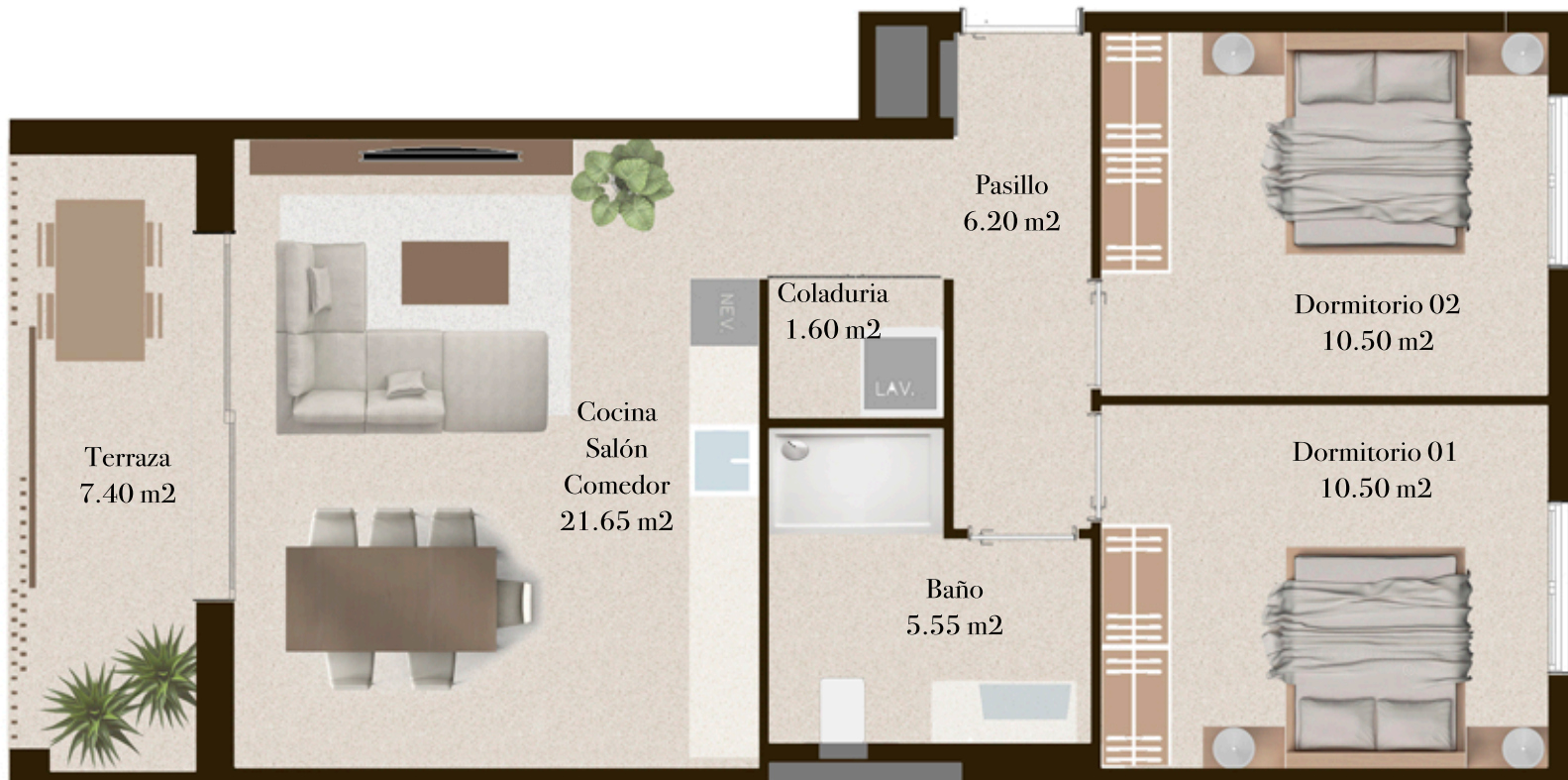
CONJUNTO RESIDENCIAL

Planta / Floor: 2
Escaleras / Stairs: 1
Puerta / Door: C

Sup. útil / Useful surface: 56,00 m²
Terraza / Terrace area: 7,40 m²
Sup. const. / Built surface: 75,80 m²



Ⓧ SECOND FLOOR



E 0 1 2 3 4 5 10 m