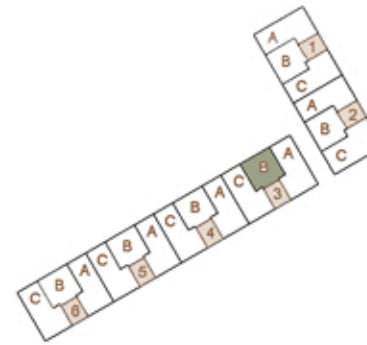


# TR 24

CONJUNTO RESIDENCIAL

Planta / Floor: 2  
Escaleras / Stairs: 3  
Puerta / Door: B

Sup. útil / Useful surface: 44,45 m<sup>2</sup>  
Terraza / Terrace area: 6,40 m<sup>2</sup>  
Sup. const. / Built surface: 59,65 m<sup>2</sup>



Ⓜ SECOND FLOOR



E 0 1 2 3 4 5 10 m