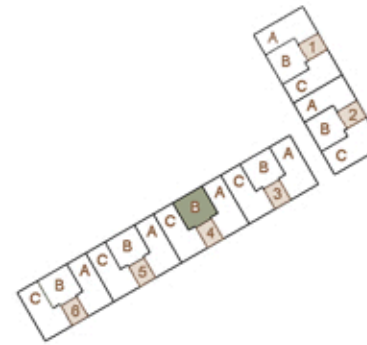


TR 24

CONJUNTO RESIDENCIAL

Planta / Floor: 2
 Escaleras / Stairs: 4
 Puerta / Door: B

Sup. útil / Useful surface: 44,45 m²
 Terraza / Terrace area: 6,40 m²
 Sup. const. / Built surface: 59,65 m²



Ⓧ SECOND FLOOR

